

heatray



TRH

TUBE RADIANT GAS HEATERS



TRH delivers reliable medium-intensity heating for extra-large areas and demanding environments.

Tube Radiant Heaters

Heatray TRH gas-fired units are non-glowing, low to medium-intensity heaters that create comfortable radiant warmth.

Tube Radiant Heaters are ideal for challenging conditions in large interior and exterior undercover spaces, as well as for low-level spot heating. These heaters are suitable for industrial, commercial, and hospitality settings.

Each unit is designed for ceiling or wall mounting, operates on Natural Gas or LPG, and is available in a range of sizes from 53MJ/h to 170MJ/h, with floor coverage of up to 180m², depending on the model and application.

Energy efficiency

Celmec's TRH forced-draught burner technology, combined with turbulent combustion enhancement, lightweight black heat tubes, and embossed aluminium reflectors, are among key innovations designed to maximise performance.

A range of controls can further enhance efficiency, including zone and thermostatic control.

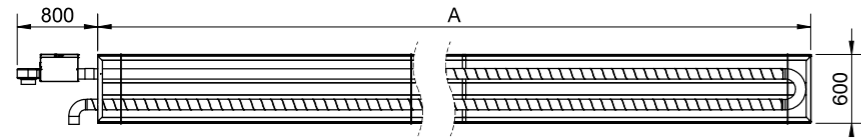
Application

- Indoor / outdoor undercover areas
- Adequately ventilated areas, otherwise the units must be flued
- Suits ceiling or wall mounting
- Mounting height 3.5m - 6.5m
- Area coverage 35m² - 180m²

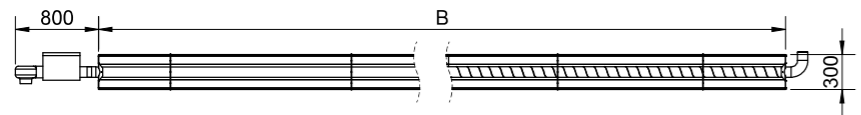
Key features

- Industrial-scale design that integrates well with outdoor undercover and large open spaces
- Highly efficient, low to medium-intensity radiant heat
- Forced-draught burner technology for optimal performance and product longevity
- Energy savings of up to 50% compared to conventional warm air heating systems
- Soft-start electronic ignition with an automatic safeguard system
- Lightweight, aluminised steel black heat tubes for rapid warm-up response, high emissivity, and long lifespan
- Fully sealed systems available, using outside air intake and flue exhaust ducting kits
- Embossed aluminium reflectors are lightweight, non-tarnishing, and provide optimal thermal performance with extended durability
- Accessories include side shields (for indoor high bays only), ball guards, decorative enclosures, grilles, burner inlet silencers, and weather protection
- Customisable control options with thermostats and zone control
- Easy installation, quiet operation, and minimal maintenance
- Certified for installations below 3.5m to accommodate projects with height restrictions (refer to TRH Technical Specifications)
- Approved by the Australian Gas Association

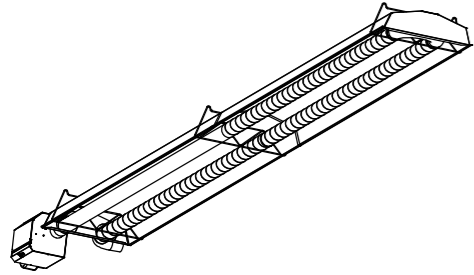
PLAN VIEW FROM BELOW: UP TYPE



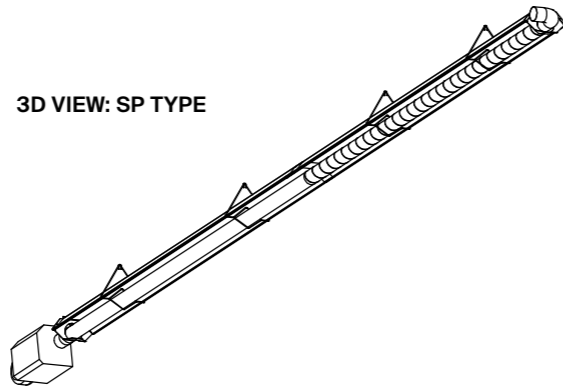
PLAN VIEW FROM BELOW: SP TYPE



3D VIEW: UP TYPE



3D VIEW: SP TYPE



TECHNICAL SPECIFICATIONS

Application	Large open indoor / outdoor undercover areas
Dimensions	Refer table following
Weight	Refer table following
Materials/ Finish	Charcoal powdercoated aluminised steel burner, embossed aluminium reflector, aluminised steel blast-tube, aluminised black heat-tubes
Mounting	Ceiling / Wall / Chain suspension
Mounting height	2500 - 6500mm (nominal)
Heat type	Non-glowing low to medium-intensity radiant heat
Capacity	53MJ/h - 170MJ/h (14.7kW - 47.2kW)
Range	2500 - 6500mm forward radius / 120° span
Control	On/Off (standard) or thermostatic control, 7-day timer options
Operation	Electronic ignition, 240V / 50Hz / 1Ph
Burner fan	150W, 250V / 50Hz / 1Ph

Connection	1/2" BSP gas connection, NG 1.1kPa-4.0kPa or LPG 2.75kPa
Burner options	<ul style="list-style-type: none"> - Inlet silencer - Weather proofing
Clearances (min)	<ul style="list-style-type: none"> - Bottom clearance from flammables - 1500mm - Side distance to wall: 300mm (UP3 / SP6), 1000mm (UP4.5-12 / SP9-15) - Top (ceiling) clearance: 150mm (UP3-6 / SP6-12), 300mm (UP7.5-12 / SP15)
Height exemptions (applicable to 53MJ/hr to 106MJ/hr)	<ul style="list-style-type: none"> - VIC - 2700mm min height (ESV ER-332)* - NSW - 2500mm min height (AS/NZS 5601.2004) - SA - 2700mm min height (TS001/2016)* - WA - 2700mm min height (GV/E:16/003)* - QLD & TAS (on project application basis)* <p>* protective mesh guards must be fitted to comply with exemption</p>
Control module	<ul style="list-style-type: none"> - 285W x 230H x 115Dmm - 1-6 illuminated system switches - Control thermostat - 7-day digital timer - Timer by-pass switch (illuminated) - Switching relay (ability to switch up to 12 burners)

MOUNTING OPTIONS



Chain suspension



Side shields

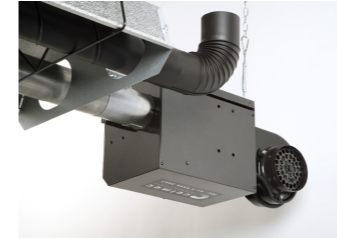


Protective mesh guard



Decorative enclosure

ACCESSORIES



Burner



Burner with silencer



Control module

"U" PACKAGES - UP

CODE	NG	LPG	MDL	MJ/h	kW	Clearance to Combustibles			Weight (kg)	Floor cover guide (m ²)	Dimension "A" (mm)	Installation Height (mm)
						Bottom	Side	Top				
2400	01	02	UP3	53	14.7	1500	300	150	34	35	3000	3500*
2405	03	04	UP4.5	79	21.9	1500	1000	150	43	48	4500	4000*
2410	05	06	UP6	106	29.4	1500	1000	150	52	70	6000	4500*
2415	07	08	UP7.5	127	35.2	1500	1000	300	63	90	7500	5500*
2700	07	08	UP9	127	35.2	1500	1000	300	74	140	9000	5500*
2705	07	08	UP12	127	35.2	1500	1000	300	93	160	12000	5500*
2710	09	10	UP9	150	41.7	1500	1000	300	74	160	9000	6000*
2715	11	12	UP12	170	47.2	1500	1000	300	93	180	12000	6500*

* Nominal height

STRAIGHT PACKAGES - SP

CODE	NG	LPG	MDL	MJ/h	kW	Clearance to Combustibles			Weight (kg)	Radiant Area (m ²)	Dimension "B" (mm)	Installation Height (mm)
						Bottom	Side	Top				
2400	01	02	SP6	53	14.7	1500	300	150	36	35	6000	3500*
2405	03	04	SP9	79	21.9	1500	1000	150	45	48	9000	4000*
2410	05	06	SP12	106	29.4	1500	1000	150	55	70	12000	4500*
2415	07	08	SP15	127	35.2	1500	1000	300	63	90	15000	5000*

* Nominal height

With efficient operation and elegant design, Heatray products deliver superior infrared warmth in all kinds of environments.



State of Grace, CBD, Melbourne.



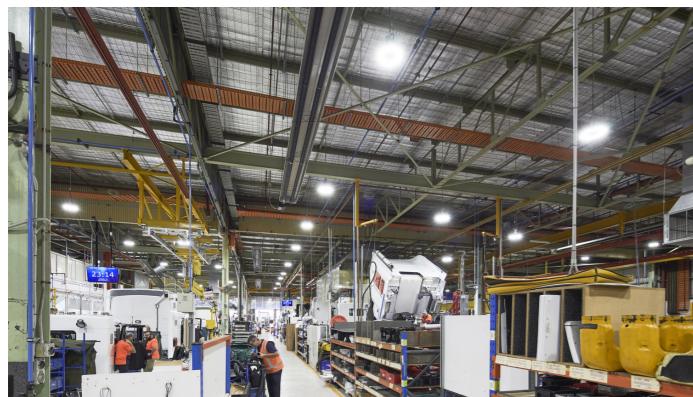
Boatbuilders Yard, South Wharf, Melbourne.



RMIT, Swanston Street, Melbourne.



Naked for Satan, Fitzroy, Melbourne.



Kenworth Trucks, Bayswater, Melbourne.



Hilton Hotel, CBD, Melbourne.



19 Simpson Street
Moorabbin Victoria 3189
Australia

+61 3 8552 8200

info@celmec.com.au

heatray.com.au

heatray

Heatray products are designed,
manufactured and supported
by Celmec - celmec.com.au

