

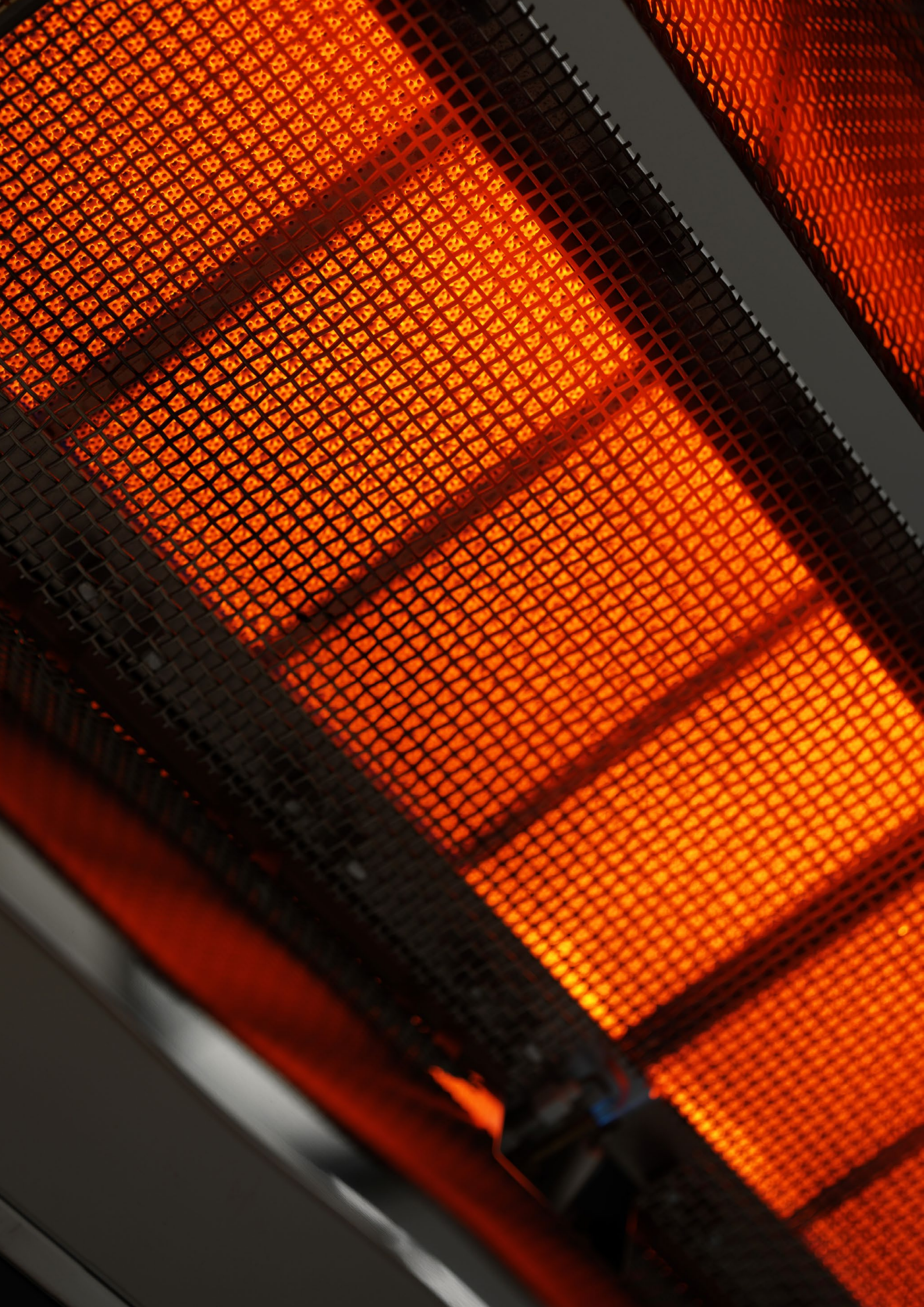
heatray



IRH-G

INFRARED GAS HEATERS





Medium to high-intensity radiant heat for highly ventilated, high-ceiling spaces and protected outdoor areas, with reliable gas-fired power.

#### Infrared Gas Heaters

Heatray IRH-G heaters use ceramic burner technology to provide high-intensity infrared radiant heat. Designed for efficiency, they perform exceptionally well in expansive interior and exterior undercover spaces with highly elevated ceilings.

IRH-G heaters are suitable for indoor highly ventilated and outdoor undercover industrial, commercial and hospitality settings. Available in Natural Gas or LPG models, they come with manual or electronic ignition.

The IRH-G range includes wall-mounted, column-mounted, ceiling-mounted, and portable units, offering a wide range of capacities and floor coverage of up to 50m<sup>2</sup>, depending on the model and application.

#### Energy efficiency

IRH-G units feature mirror-quality, high-grade stainless steel reflectors and superior high-density ceramic tiles, which absorb and radiate maximum heat. This enhances the infrared function, ensuring optimal performance.

#### Application

- Indoor / outdoor undercover wind-protected areas
- Adequately ventilated commercial and industrial areas
- Suits wall or ceiling mounting
- Mounting height 2.5 - 5.5m
- Area coverage 5m<sup>2</sup> - 50m<sup>2</sup>

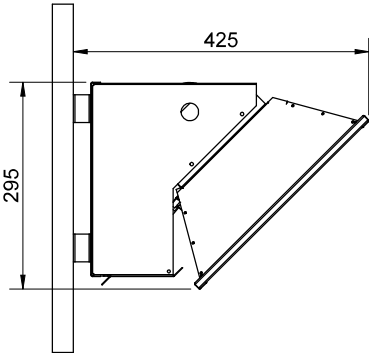
#### Key features

- Thermally efficient gas-fired ceramic burners and highly polished stainless steel reflectors ensure all heat is directed where needed
- Compact design with exceptionally high heat output for its size
- Gas control components are concealed within a charcoal-finished, powder-coated casing for a sleek, unobtrusive appearance
- Heat and rain shield accessories provide protective barriers for low ceiling clearances and outdoor settings
- Decorative portable units include an in-built heat shield, a concealed gas bottle compartment, and a tabletop
- Column-mounted units are finished in high-grade stainless steel and feature an in-built heat shield
- Approved by the Australian Gas Association

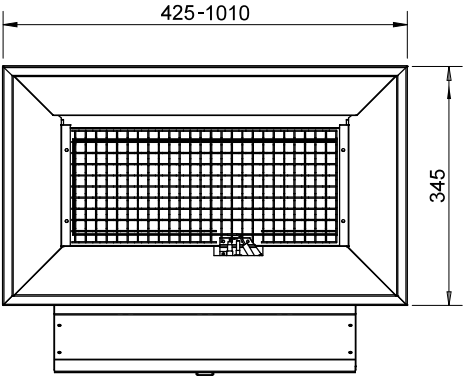


IRH-G

WALL APPLICATION



FRONT VIEW



TECHNICAL SPECIFICATIONS

Application	Indoor / outdoor undercover wind protected, highly ventilated public spaces (not for domestic use).
Dimensions	Refer table following
Weight	Refer table following
Materials/ Finishes	Charcoal powdercoated steel casing, polished high-grade stainless steel reflector.
Mounting	Wall / Column / Ceiling / Portable
Mounting height	2500 - 5500mm
Heat type	Glowing medium to high-intensity radiant heat
Capacity	11.5MJ/h - 46.5MJ/h (3.2kW - 12.9kW)
Range	2500 - 6000mm forward radius / 120° span
Control	On/Off (recommended to be individually switched)
Operation	Manual piezo or electronic ignition
Connection	1/2" BSP gas connection, NG 1.1kPa-4.0kPa or LPG

Clearances (refer table following)	– Clearance from flammables: 1500mm to the side and forward of the heater
Heat shields	– Designed to reduce ceiling clearance – Model 102/112: 200mm clearance, 104/114: 300mm clearance – Polished stainless steel  * Note: Not available for models 108/118. Models 102s/112s c/w in-built heat shields
Floor coverage guide	– High activity areas: Horizontal radius = mounting height – Medium activity areas: Horizontal radius = 0.75 x mounting height – Draughty areas: Horizontal radius = 0.5 x mounting height

MOUNTING OPTIONS



IRH-G 102/112



IRH-G 104/114



IRH-G 108/118



DP102s, Decorative Portable

Model IRH-G		Dimensions (mm)	Weight (kg)	Ignition type	NG	LPG	Mounting height (mm)	Min. ceiling height clearance (mm)
	<b>102s</b> Manual	340W x 530H x 220D	5	Manual Piezo or Electronic ignition (240V)	✓	✓	2500 - 3000	200
	<b>112s</b> Auto 11.5MJ/h 3.2kW							
	<b>102</b> Manual <b>112</b> Auto 11.5MJ/h 3.2kW	425W x 295H x 425D	7	Manual Piezo or Electronic ignition (240V)	✓	✓	2500 - 3000	900*
	<b>104</b> Manual <b>114</b> Auto 23.5MJ/h 6.5kW	580W x 295H x 425D	10	Manual Piezo or Electronic ignition (240V)	✓	✓	2700 - 3500	1100*
	<b>108</b> Manual <b>118</b> Auto 46.5MJ/h 12.9kW	1010W x 295H x 425D	16	Manual Piezo or Electronic ignition (240V)	✓	✓	4000-5500	1100
	<u>Left:</u> <b>P102</b> 11.5 MJ/h 3.2kW <b>P104</b> 23.5MJ/h 6.5kW	400W x 430D (base) x 2170H	32	Manual Piezo ignition		✓	1800	900* 1100*
	<u>Right:</u> <b>DP102s</b> 11.5MJ/h 3.2kW		44					
		455W x 450D (table) x 2190H	52	Manual Piezo ignition		✓	1800	200



With efficient operation and elegant design, Heatray products deliver superior infrared warmth in all kinds of environments.



Stomping Ground Brewery, Collingwood, Melbourne.



Howler, Brunswick, Melbourne.



Half Moon Hotel, Brighton, Melbourne.



The Esplanade Hotel, St Kilda, Melbourne.



Meccabah, Fortitude Valley, Brisbane.



Transport Bar, Federation Square, Melbourne.





19 Simpson Street  
Moorabbin Victoria 3189  
Australia

+61 3 8552 8200

[info@celmec.com.au](mailto:info@celmec.com.au)

[heatray.com.au](http://heatray.com.au)

# heatray



Heatray products are designed,  
manufactured and supported  
by Celmec - [celmec.com.au](http://celmec.com.au)

