

# CERAMIC GLASS TECHNOLOGY



**ERH Onyx**  
ELECTRIC RADIANT HEATING

**heatray**

# ERH Onyx

## Electric Radiant Heating

Heatray ERH Onyx are sleek, slimline, non-glowing, highly efficient radiant heaters, providing soft warmth that is directly absorbed by people and objects.

ERH Onyx heaters are ideal for integrating into indoor and outdoor settings being highly durable and weather resistant - suitable for commercial, hospitality and residential applications.

Onyx heaters feature a variety of installation options including adjustable surface or recessed ceiling mounting and wall mounting systems, designed to be integrated with new and existing structures and Heatray umbrellas. The units are available in one compact size; 955mm x 155mm, each unit covering an area of up to 5.5m<sup>2</sup>, depending on application.

## Efficiency

The focal point of the heater utilises state of the art Ceramic Glass technology to achieve highest possible heat output, minimising energy loss. This advancement sets a new benchmark within the industry making it the ideal choice for all indoor and outdoor applications.

## Application

- Indoor / outdoor wind-protected undercover areas
- Heatray umbrellas
- Areas where combustion gases are not permissible
- Mounting height 2.3m - 2.7m
- Area coverage 2.2m<sup>2</sup> - 5.5m<sup>2</sup>

## Key Features

- Designed to be slimline and sleek, aesthetically complementing all styles of architectural surrounds
- Flexible mounting options to suit all applications
- 1200W, 1800W & 2400W models available
- Water resistant IPX5 rated allowing for outdoor installation, providing protection against unforeseen exposure to rain and enabling safe cleaning and rinsing
- Rainshield available for outdoor exposed applications
- Control Modules provide On/Off operation or zone control for banks of heaters
- Minimal above heater clearance enabling installation into areas with low ceilings
- Silent operation, clean and emission free
- Units in full compliance with international standards







- 01 ERH Ceramic Glass face
- 02 Aqua Dining, Milsons Point, Sydney
- 03 Q2, CBD, Melbourne
- 04 Rütiberg residence, Switzerland
- 05 Dominic's Steakhouse, Scottsdale, Arizona

## Technical Specifications

- **Application:** Indoor / outdoor undercover wind-protected areas
- **Dimensions:** 955L x 155W x 45Dmm
- **Weight:** 6.8kg (excluding mounting bracket)
- **Finish:** Aluminised steel, black HTP casing, black Ceramic Glass face
- **Mounting:** Wall / ceiling / recessed / umbrella
- **Mounting height:** 2300 - 2700mm
- **Area coverage:** Refer table below
- **Heat type:** Non-glowing radiant heat
- **Power:** 1200W, 1800W, 2400W options / 1Ph / 50Hz / 220-240V
- **Range:** 1000 - 1500mm forward radius / 120° span
- **Control:** On/Off
- **Operation:** Approx. 20 mins to reach full operating temp.
- **Connection:** 3-pin plug or hard-wire
- **Protection:** IPX5
- **Rain Shield**
  - 1070 x 230mm
  - Available for outdoor exposed applications
  - Aluminised steel, powdercoated
- **Clearances (min)**
  - Forward clearance from flammables - 1500mm
  - Ceiling clearance - 80mm
  - Side distance to wall - 80mm
- **Control module**
  - 375 x 220mm - 1Ph
  - Available for zone control of up to 4, 8 or 12 heaters
  - Safety cut-out, circuit protection, low Amp switching, two-zone control & separate lighting circuit
  - Optional 2Ph & 3Ph control modules available



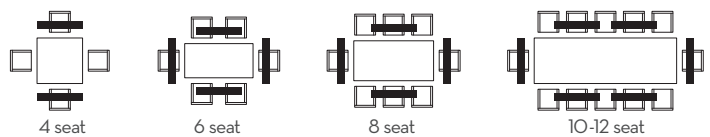
Front view



Side view

Suggested  
Mounting height  
2300 - 2700mm

## ERH Design Guide



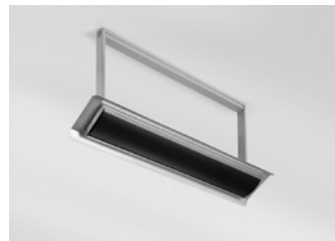
## Mounting options



Recessed ceiling unit



Ceiling mount bracket



Wall/ceiling bracket & rain shield



ERH umbrella integration



Single unit tube suspension



Double unit tube suspension



Chain suspension



Control module

| Model         | Power @ 240V |        | Suggested mounting height (mm) | Floor Coverage Guide                  |                                     |                          |
|---------------|--------------|--------|--------------------------------|---------------------------------------|-------------------------------------|--------------------------|
|               | (Watts)      | (Amps) |                                | Outdoor unprotected (m <sup>2</sup> ) | Outdoor protected (m <sup>2</sup> ) | Indoor (m <sup>2</sup> ) |
| ERH Onyx 1200 | 1200         | 5      | 2300 - 2500                    | n/a                                   | 2.2 - 2.5                           | 2.5 - 3.0                |
| ERH Onyx 1800 | 1800         | 7.5    | 2300 - 2700                    | n/a                                   | 2.5 - 3.5                           | 3.0 - 4.5                |
| ERH Onyx 2400 | 2400         | 10     | 2300 - 2700                    | n/a                                   | 3.5 - 4.0                           | 4.5 - 5.5                |